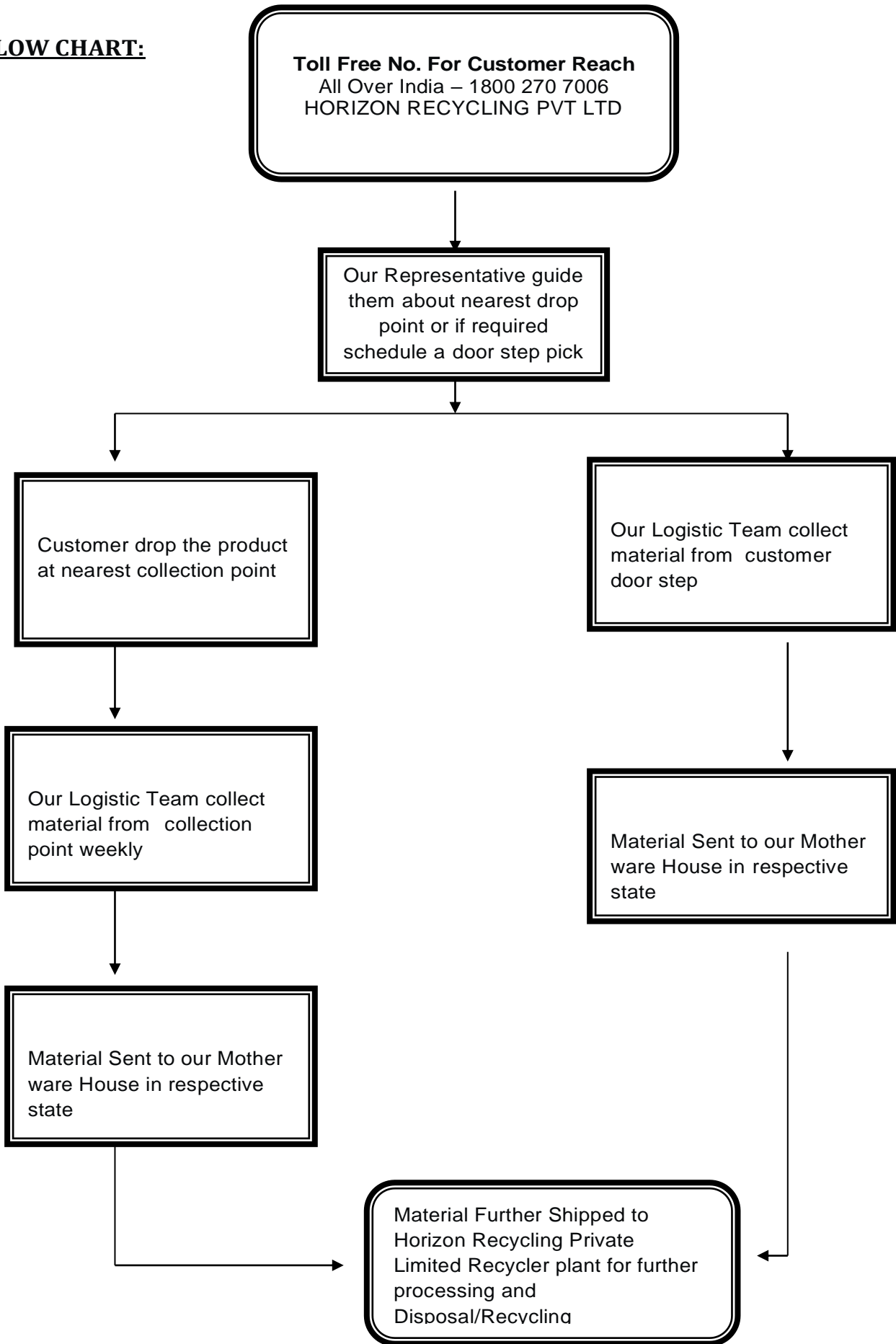


Flow-chart of channelization

We have partnered with Horizon Recycling Pvt Ltd Recycler registered with UPPCB for management and dismantling/recycling/disposal of all our e-waste.

- As a part of agreement HORIZON RECYCLING PVT LTD Recycler collects all our E-waste generated from PAN India and disposes the same. at their plant in Saharanpur UP .
- HORIZON RECYCLING PVT LTD recycler our e waste management partner is having all authorization related e-waste dismantling from UPPCB /CPCB and having all connects related to Air/water/Hazardous waste. They have a capacity of 12000 MT per annum.
- Keeping in view our sales volume we have and generation of e-waste we have decided to follow these mechanisms in our organization for collection of e-waste.
- There will be a Toll Free Number where in Company /Authorized Recycler can be contacted to locate collection points for returning back the handsets (E-Waste} or for arranging pick-up of E-Waste.
- Awareness through website, newspaper advertisements, user manual, product package and banners at Service or centres to aware customer about hazardous of improper handling of e-waste as well as to suggest them about nearest e-waste drop point or to schedule a pickup from their door step with the help our pan India logistics facility.

FLOW CHART:



Do's & Don'ts

Do's

- ✚ Always look for information on the catalogue with your product for end-of-life equipment handling.
- ✚ Ensure that only Authorize Recyclers repair and handle your electronic products.
- ✚ Always call our E-waste Authorize collection Centers/Points to dispose products that have reached end-of-life.
- ✚ Always drop your used electronic products, batteries or any accessories when they reach the end of their life at your nearest Authorized E-waste Collection Centers/Points.
- ✚ Always disconnect the battery from product, and ensure any glass surface is protected against breakage.

Don'ts

- ✚ Do not dismantle your electronic products on your own.
- ✚ Do not throw electronics bins having "Do not dispose" sign.
- ✚ Do not give e-waste to informal (Kabbadi) and unorganized sectors like Local Scrap Dealer/Rag Pickers.
- ✚ Do not dispose your product in garbage bins along with municipal waste that ultimately reaches landfills.

- Detail of Collection Centres

The collection centres meant for collection of material from end user and channelizing the same through our e-waste management partner **Horizon Recycling Pvt. Ltd.** Recycler. **Further M/S Horizon Recycling Pvt. Ltd. has joint venture / agreement with OM LOGISTICS LTD. to collect and store the material to channelize the e-Waste (collected material) to the M/S Horizon Recycling Pvt. Ltd.**